

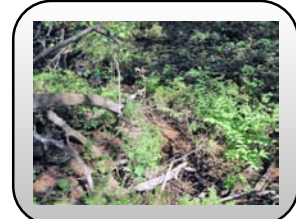
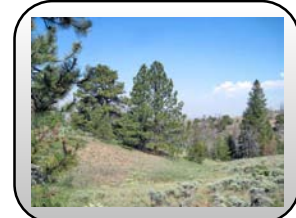
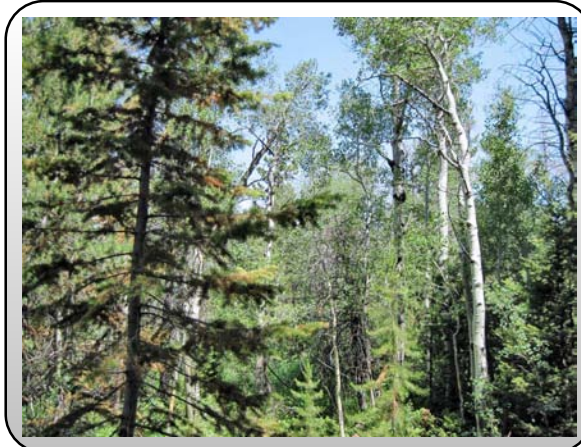
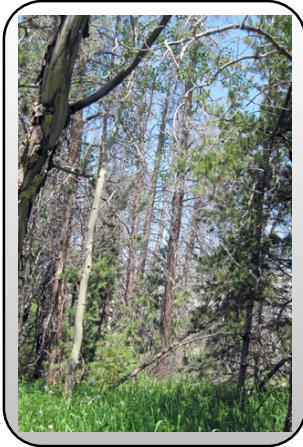


Northern Colorado
Mountain
Land | Cabins | Ranches

Camping Perfection \$ 74,500

Parcel 6 Section 28 Sand Creek Park Larimer County Colorado

MLS No. 825947



Small creek, Aspen and Pines adorn the property in perfect proportion to the wide open views on this 40 acres! Added benefits include bordering BLM and close to Roosevelt National Forest. Only item missing - you!

Acres +/- 40

Association Dues \$ 80

Property taxes \$ 1,328

Located 1 ½ hrs NW of Fort Collins CO
30 minutes South of Laramie WY

- Small creek
- Borders BLM
- Panoramic 360 degree views
- Aspens and Pines
- 1/4 mile to Roosevelt Nat'l Forest
- Area known for its wildlife
- Summertime recreation

Additional photographs are located at www.cabin-country.com
Information obtained from reliable sources and believed to be accurate

Bill McClelland bill@cabin-country.com 970 482-5263
Cabin Country Post Office Box 1967 Fort Collins Colorado 80522-1967