



Northern Colorado
Mountain
Land | Cabins | Ranches

Crisp Autumn Days \$ 92,500

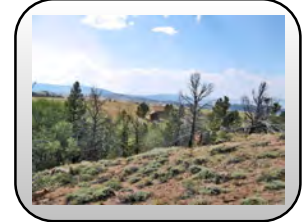
Parcel 14 Section 29

Sand Creek Park

Larimer County Colorado

850 Summit View Way Red Feather Lakes CO 80545

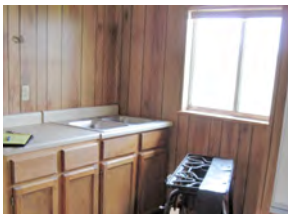
MLS No. 827678



Cool nights and changes in the color of the landscape, surely mean it's time to slow down. Come enjoy 40 acres with the perfect blend of trees hiding the seasonal creek. Panoramic views are from all sides. 2-bedroom cabin and storage shed needs work to make it a place you'll be sure to enjoy.

Acres +/-	40
Association Dues	\$ 80
Property taxes	\$ 883
Located	1 ½ hrs NW of Fort Collins CO 30 minutes South of Laramie WY
Built	1986
Style	1 story
Total Sq Ft	576
Bedrooms	2 Bathroom 1 rough-in

- Lots of Aspen line the intermittent small creek
- Terrific views in every direction
- Off-the beaten path
- Built-in refrigerator
- Wood stove
- 24' x 10' deck
- 16' x 12' storage shed
- All Improvements require work
- Area known for its wildlife
- Summertime recreation



Additional photographs are located at www.cabin-country.com
Information obtained from reliable sources and believed to be accurate

Bill McClelland bill@cabin-country.com 970 482-5263
Cabin Country Post Office Box 1967 Fort Collins Colorado 80522-1967