



Cabin Country

Explore Northern Colorado's mountains
cabin-country.com



1459 Pratt Creek Rd Livermore CO 80536

Diamond Creek

\$ 354,500

35 acres to watch the deer and elk play in the meadows which are surrounded by tall pines and aspen. Read a book on one of the 2 covered decks. 2 bedroom Swedish cope log cabin powered by generator. Wood stove for heating the place. National forest close-by for added hiking. Off the grid with locked gate privacy in a mountainous setting.

National Forest nearby

Acres ± **35**

Park-like meadows

Pines and Aspen galore

Association Dues (Yr) \$ **100**

Off grid privacy

Property Taxes \$ **2,090**

6'x8' generator shed and 8'x10' diesel shed

Well and septic system

Location

Fuel Storage tanks

1 ½ hrs NW of Fort Collins CO

Furniture included - Turn key opportunity

Difficult winter access

Information obtained from reliable sources and believed to be accurate

Bill McClelland bill@cabin-country.com 970-482-5263



Cabin Country

Explore Northern Colorado's mountains
cabin-country.com

School District Poudre

Total Sq Ft 1857
 Main 1092 Upper 765

If sq ft is a concern, property should be independently measured

Built 1991

Electric Generator

Heat Wood stove

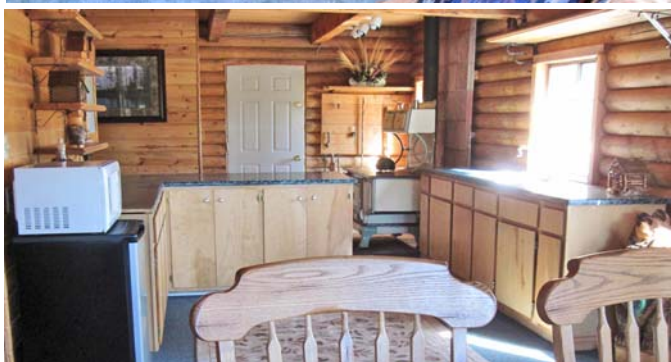
Well Permit 188445

Well Information 300' depth 40' static
 4 GPM Drilled 1995

(New pressure tank 2020)

Baths 3/4 main 1/2 upper

Rooms	Level	Length	Width	Floor
Master Bd	M	16	10	Carpet
Bedroom 2	U	10	11	Carpet
Dining rom	M	13	11	Carpet
Kitchen	M	11	11	Carpet
Laundry	M	06	10	Other
Living room	M	27	13	Carpet
Family room	U	16	09	Other
Office	U	10	11	Carpet



Information obtained from reliable sources and believed to be accurate

Bill McClelland bill@cabin-country.com 970-482-5263