

\$92,500

Access 35 acres at the base of Bull Mtn, corners on public land (BLM) with intermittent Bull Run Creek. Check out the spectacular views and scattered pines. Sand Creek fishing closeby. Bring your RV and pick the perfect spot for your future cabin.



CABIN COUNTRY

Features

Sand Creek Park

Parcel 4 Section 4

Corners public land (BLM)

Base of Bull Mountain views

Intermittent Bull Run Creek traverses the property

Clearings with scattered pines

Fishing nearby

Terrific Summertime recreation

Moose and elk habitat



Photo not of the property however represents characteristics of the property

Specifics

Acres ± 35

Association Dues (yr) \$ 105

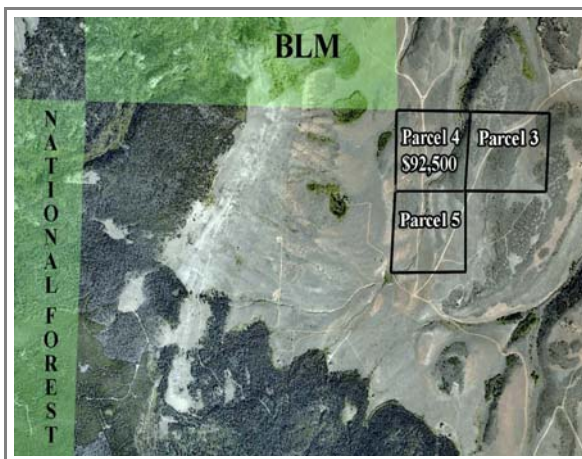
Property Taxes \$ 983

Location

1 ½ hrs NW of Fort Collins CO

30 minutes South of Laramie WY

MLS No



Additional adjoining property available. Call for more information

Information obtained from reliable sources and believed to be accurate



Cabin Country

970-482-5263

PO Box 1967 Fort Collins CO 80522-1967

Bill McClelland bill@cabin-country.com

Come explore Northern Colorado's mountains