

\$77,500

Share this hi-country hangout of 35 acres with moose, deer, elk and antelope. Corners old cattle water hole. Intermittent Bull Run Creek creates lush country below the mountain. You're in an area designed for recreational fun, including private fishing, scenic vistas, and National forest access. Bring your camera.



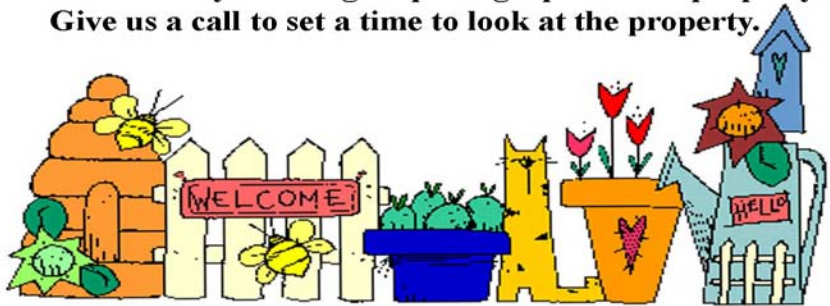
Features

Sand Creek Park

Parcel 5 Section 4

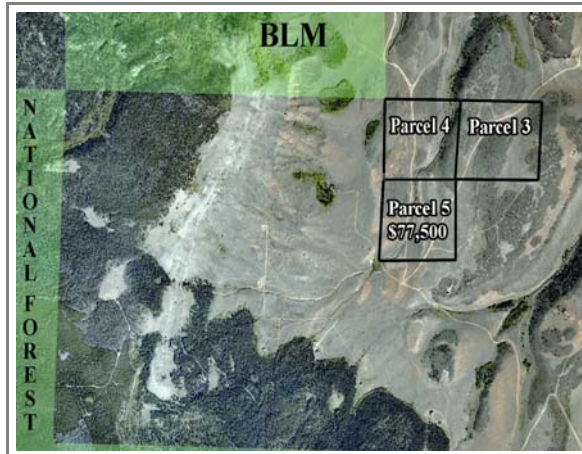
- SW corner at edge of old cattle water hole
- Intermittent Bull Run Creek traverses the property
- Fishing nearby
- Terrific summertime recreation
- Moose and elk habitat

We are currently working on photographs of the property. Give us a call to set a time to look at the property.



Specifics

- Acres ± 35
- Association Dues (yr) \$ 105
- Property Taxes \$ 983
- Location 1 ½ hrs NW of Fort Collins CO
30 minutes South of Laramie WY
- MLS No



Additional adjoining property available. Call for more information

Information obtained from reliable sources and believed to be accurate



Cabin Country

970-482-5263 PO Box 1967 Fort Collins CO 80522-1967

Bill McClelland bill@cabin-country.com

Come explore Northern Colorado's mountains