

\$122,000

35 acres in Sand Creek with stands of Aspen is surely a place you'll always enjoy for your recreational needs includes a shed/cabin for your other needs. Don't overlook the 360 degree views which includes the area's red rock cliff formations.



Features

Sand Creek Park

Parcel 11 Section 26

Aspens have hidden treasures

Grassy meadows

Shed/cabin turn-key ready

Sand Creek fishing nearby

Summertime recreation

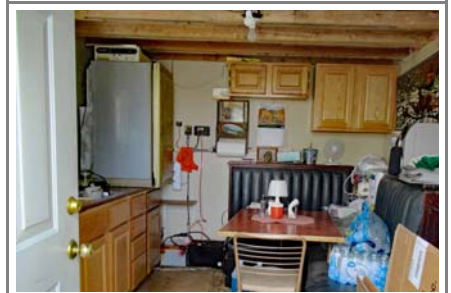
Area known for wildlife



Specifics

| | |
|--------------------------------|----------|
| Acres ± | 35 |
| Association Dues (yr) | \$ 105 |
| Property Taxes | \$ 2,058 |
| Location | |
| 1 ½ hrs NW of Fort Collins CO | |
| 30 minutes South of Laramie WY | |
| MLS No | 992574 |

Information obtained from reliable sources and believed to be accurate



Cabin Country

970-482-5263

PO Box 1967 Fort Collins CO 80522-1967

Bill McClelland bill@cabin-country.com

Come explore Northern Colorado's mountains